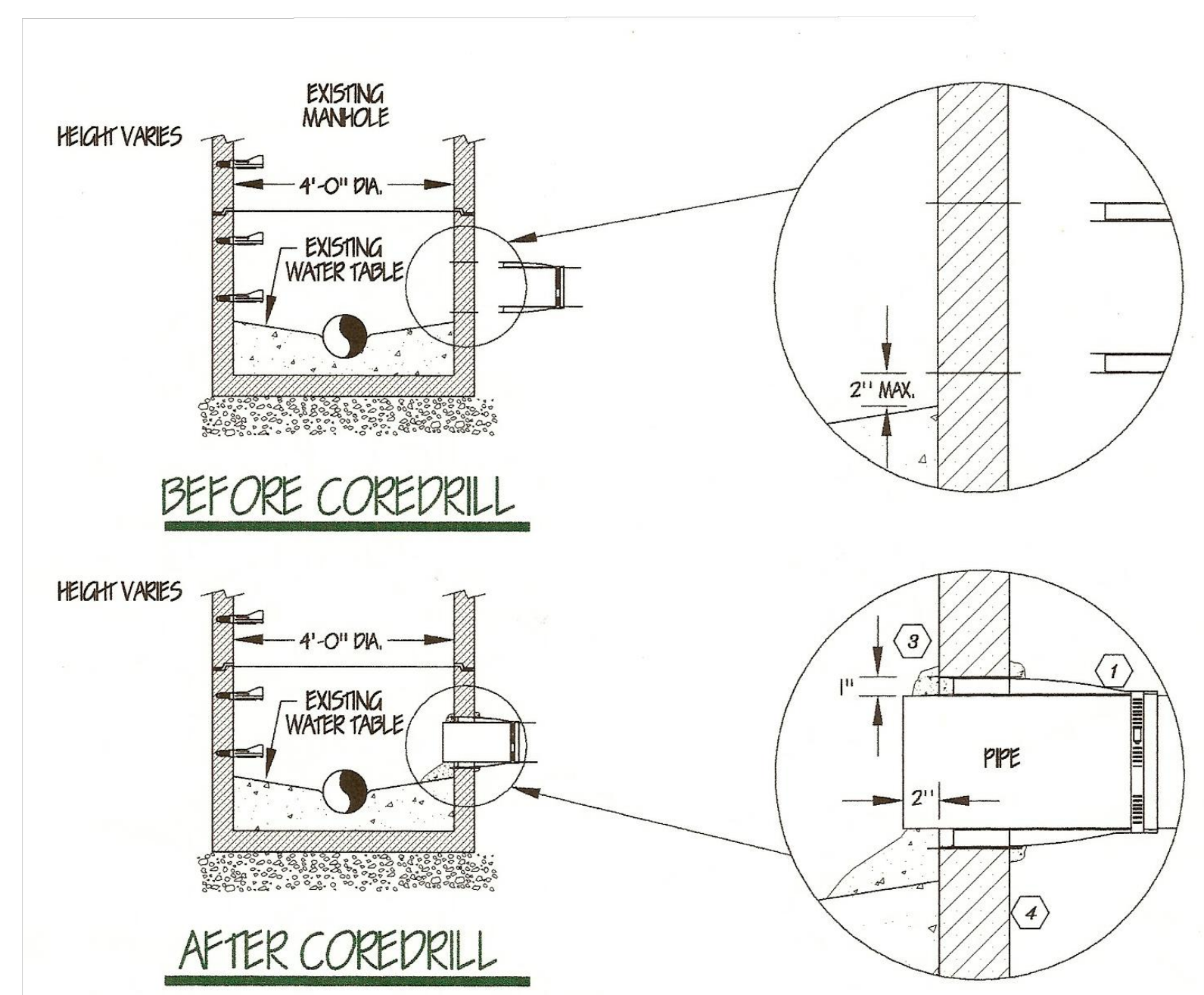


TYPICAL PVC/DI GRAVITY SEWER PIPE BEDDING AND BACKFILL FOR SEWERLINE INSTALLATION ON STABLE SOIL OR SOLID ROCK DETAIL

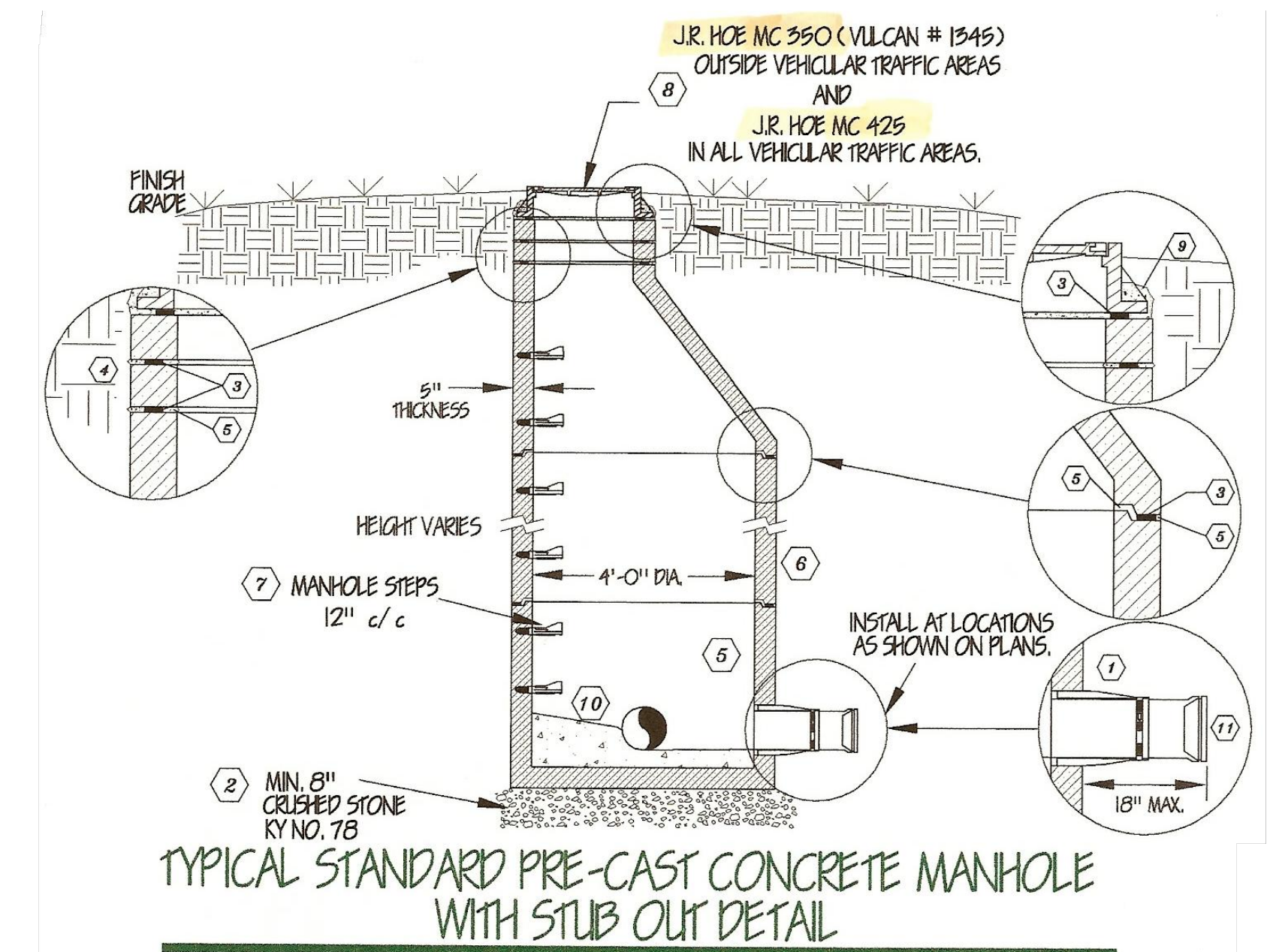
- NOTES:
- IN THE CASE OF OPEN-CUT CROSSING OF CITY, COUNTY, OR STATE ROADS, THE ENTIRE TRENCH SHALL BE BACKFILLED WITH KY NO. 78 CRUSHED STONE.
  - IF TRENCH BOTTOM IS SOLID ROCK, 6" MIN. OF HAND PLACED SELECTED PIPE BEDDING SHALL BE INSTALLED.

<p>CITY UTILITIES COMMISSION 901 SOUTH MAIN STREET CORBIN, KY. 40701</p>	<p>TYPICAL PVC/DI GRAVITY SEWERLINE BEDDING AND BACKFILL FOR SEWERLINE INSTALLATION ON STABLE SOIL OR SOLID ROCK DETAIL</p> <p>SEWER DETAIL NO. 33</p>	SCALE: NONE
		FILE NAME: SE DETAIL 33
		DATE: 10-86
		DATE REVISED: 5-97
		DRAWN BY: J.W.N.
		APPROVED BY: G.P.R.
SHEET NO.: 1 OF 1		



- NOTES:
- WATERTIGHT NEOPRENE BOOTS SHALL BE "KOR-N-SEAL" AS MANUFACTURED BY NATIONAL POLLUTION CONTROL SYSTEMS INC. OR APPROVED EQUAL.
  - COREDRIILL HOLE THROUGH MANHOLE WALL TO EXACT DIAMETER RECOMMENDED BY THE MANUFACTURER OF THE NEOPRENE BOOT, NAMELY, NATIONAL POLLUTION CONTROL SYSTEMS INC. AND JACK BOOT INTO PLACE.
  - GROUT COREHOLE AND PIPE INSIDE AND OUTSIDE OF MANHOLE.
  - COAT DISTURBED AREAS ON EXTERIOR WALLS OF MANHOLE WITH A BITUMINOUS FOUNDATION COATING AND ALLOW TO DRY 24 HRS. BEFORE BACKFILLING.

<p>CITY UTILITIES COMMISSION 901 SOUTH MAIN STREET CORBIN, KY. 40701</p>	<p>TYPICAL PIPE INSTALLATION INTO EXISTING MANHOLE DETAIL</p> <p>SEWER DETAIL NO. 30</p>	SCALE: NONE
		FILE NAME: SE DETAIL 30
		DATE: 10-86
		DATE REVISED: 5-97
		DRAWN BY: J.W.N.
		APPROVED BY: G.P.R.
SHEET NO.: 1 OF 1		



- NOTES:
- WATERTIGHT NEOPRENE BOOTS SHALL BE "KOR-N-SEAL" AS MANUFACTURED BY NATIONAL POLLUTION CONTROL SYSTEMS INC. OR APPROVED EQUAL AT ALL INLET & OUTLET PIPES IN MANHOLE.
  - SET PRECAST MANHOLE ON KY NO. 78 CRUSHED STONE. MINIMUM OF 8 INCHES.
  - PLACE CONSEAL SEALANT OR "O" RINGS BETWEEN ALL JOINTS.
  - PLACE 2", 4" OR 6" CONCRETE MANHOLE GRADE RINGS AS REQUIRED (MAX 12").
  - GROUT JOINTS ON INTERIOR AND EXTERIOR OF MANHOLE BARREL SECTION.
  - COAT EXTERIOR WALLS OF MANHOLE INCLUDING FIELD GROUTED JOINTS WITH A BITUMINOUS FOUNDATION COATING AND ALLOW TO DRY 24 HRS. BEFORE BACKFILLING.
  - SEE CUC SEWER DETAIL - "TYPICAL PLASTIC MANHOLE STEP".
  - SEE CUC SEWER DETAIL - "TYPICAL MANHOLE FRAME & COVER".
  - SET FRAME IN MORTAR AND COAT WITH BITUMINOUS FOUNDATION COATING AND ALLOW TO DRY 24 HRS. BEFORE BACKFILLING.
  - FIELD GROUT WATER TABLE AND FLOW LINES TO INLET AND OUTLET OF ALL PIPES.
  - BELL & PLUG BY SAME MANUFACTURER.

<p>CITY UTILITIES COMMISSION 901 SOUTH MAIN STREET CORBIN, KY. 40701</p>	<p>TYPICAL STANDARD PRE-CAST CONCRETE MANHOLE WITH STUB OUT DETAIL</p> <p>SEWER DETAIL NO. 3</p>	SCALE: NONE
		FILE NAME: SE DETAIL 3
		DATE: 10-86
		DATE REVISED: 5-97
		DRAWN BY: J.W.N.
		APPROVED BY: G.P.R.
SHEET NO.: 1 OF 1		

WATER, SEWER AND ACCESS ROAD EXTENSIONS  
**GRACE CLINIC PROJECT**  
 SOUTHEAST KENTUCKY  
 INDUSTRIAL DEVELOPMENT  
 AUTHORITY  
 KNOX COUNTY, KENTUCKY

PROJECT NO. 2063-65	DESIGNED BY: D.S.T.	DATE:
	DRAWN BY: G.M.S.	
	CHECKED BY: D.S.T.	
	REVIEWED BY: D.S.T.	
	DATE: AUGUST 2016	
	SCALE: AS NOTED	

Engineers  
Architects  
Planners

OF KENTUCKY, INC.

624 Washington Way  
Lexington, KY 40503  
Phone: (606) 223-6684  
Fax: (606) 223-2807  
www.mselex.com

DRAWING NO.  
**SD3**  
 SHEET OF